



SANTA CLARA COUNTY

REENTRY SERVICES

“SEAMLESS SYSTEM OF SERVICES, SUPPORT AND SUPERVISION”

Ready to Change: Promoting Safety and Health for
the Whole Community

County's Reentry Policy Efforts

AB 109 Implementation

In response to Court decisions regarding prison overcrowding, the State Legislature approved AB 109 and AB 117. The result was a shift in responsibility for supervision from State Parole to County Probation for individuals leaving the State Prison system. Sentencing protocols also changed with more convicted felons remaining in local jails instead of being sent to State prison. The Community Corrections Partnership chaired by Acting Probation Chief Karen Fletcher meets quarterly. Next meeting: February 20, 2014.

Reentry Network

The Board of Supervisors approved the establishment of a cross-system reentry network to develop and implement the Adult Reentry Plan in order to reduce recidivism and promote public safety. The Reentry Network chaired by Supervisor Cindy Chavez meets quarterly. Next meeting: March 26, 2014.

Vision, Mission, & Guiding Principles/Values

Vision

Build safer communities and strengthen families through successful reintegration and reentry of formerly incarcerated individuals back into Santa Clara County.

Mission

To reduce recidivism by using evidence-based practices in implementing a seamless system of services, supports, and supervision.

Guiding Principles & Values

- Reentry and reintegration begin while the individual is incarcerated.
- Evidence-based practices are utilized when developing programs and policies.
- Collaboration, coordination, information, and communication are critical to the success and sustainability of the Reentry Network.
- High- to moderate-risk formerly incarcerated individuals are targeted through the use of validated assessment tools.
- Assessment and case management tools targeting continuous reentry planning are incorporated at the point of admission to the criminal justice systems and continue to be used through pre- and post-release.
- The strategic plan is gender-responsive, trauma-informed, and culturally competent.

How did SCC Approach the Implementation of AB 109?

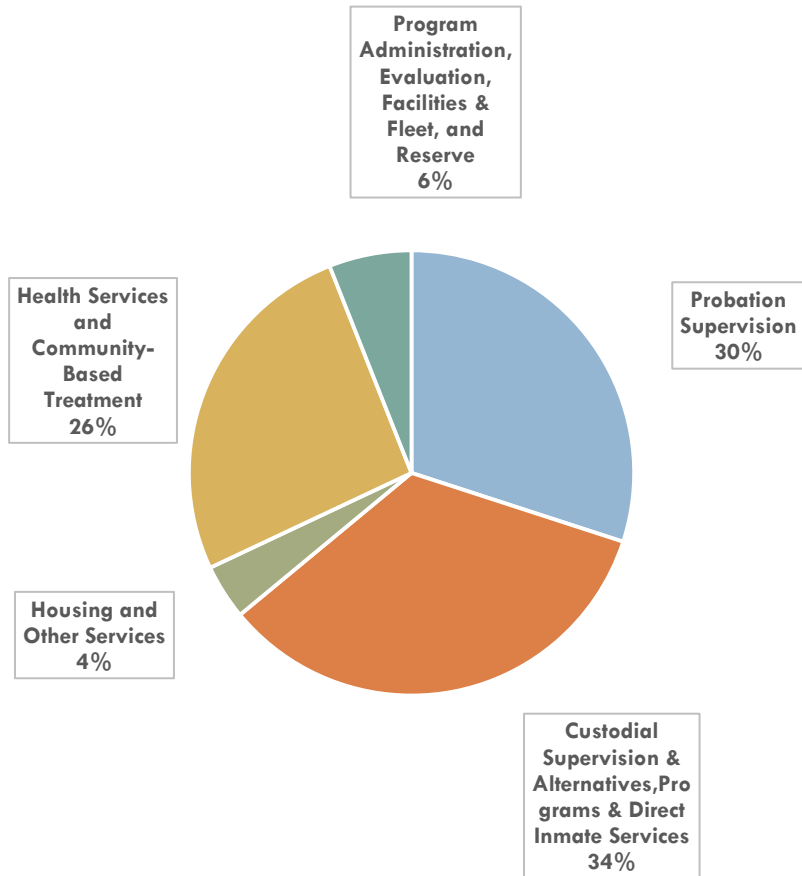
- ✓ Embraced the concept from the beginning recognizing that local efforts could be far more effective than state efforts in reducing recidivism.
- ✓ No early release from SCC jails as we have capacity and are not under court order. Individuals coming from the State system would have been released in any event now being supervised by Probation instead of Parole.
- ✓ Approached the allocation of resources in a balanced fashion: Supervision (Probation), Custody (Sheriff), Services (Mental Health, Alcohol & Drug Services, physical health, Employment Training, Housing).
- ✓ Implemented a rigorous program evaluation component, utilizing an outside, third-party to provide objective feedback in terms of success/failure of programs and approaches.
- ✓ Committed to changing direction based on results of evaluation.

How did SCC Approach the Implementation of AB 109? (continued)

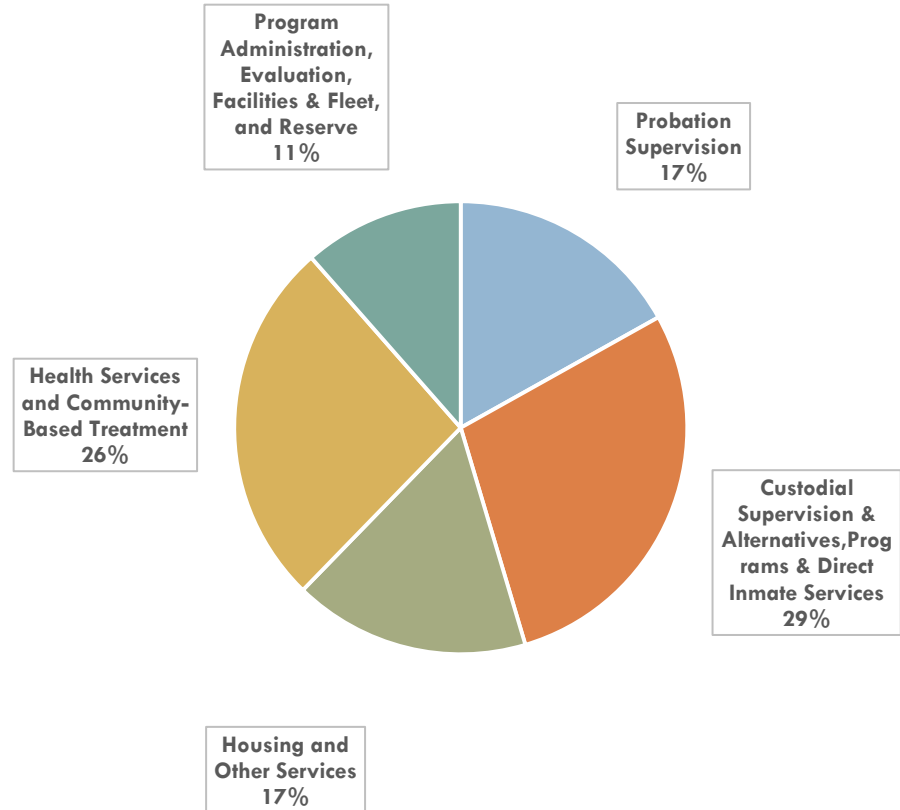
- ✓ SCC established the Reentry Resource Center (RRC), opening the doors to all individuals reentering society from a correctional setting not just AB-109 clients.
- ✓ State Parole is so impressed with the results of the Center they are in the process of co-locating their own Day Reporting Center in Santa Clara County bringing an additional \$1 million in state funds to the users of the center.
- ✓ Probation has established a 1-30 caseload for PRCS clients, a far more rigorous supervision level than ever offered by State Parole.
- ✓ The level of collaboration within the SCC Criminal Justice system has increased and allowed for improved outcomes for clients.
- ✓ At the same time we recognize that continuous improvement must be our top priority and collaboration outside of the County can be improved to address concerns of our partners throughout the County.

Reentry and Realignment Budget

FY 2012 TOTAL BUDGET: \$14,103,455



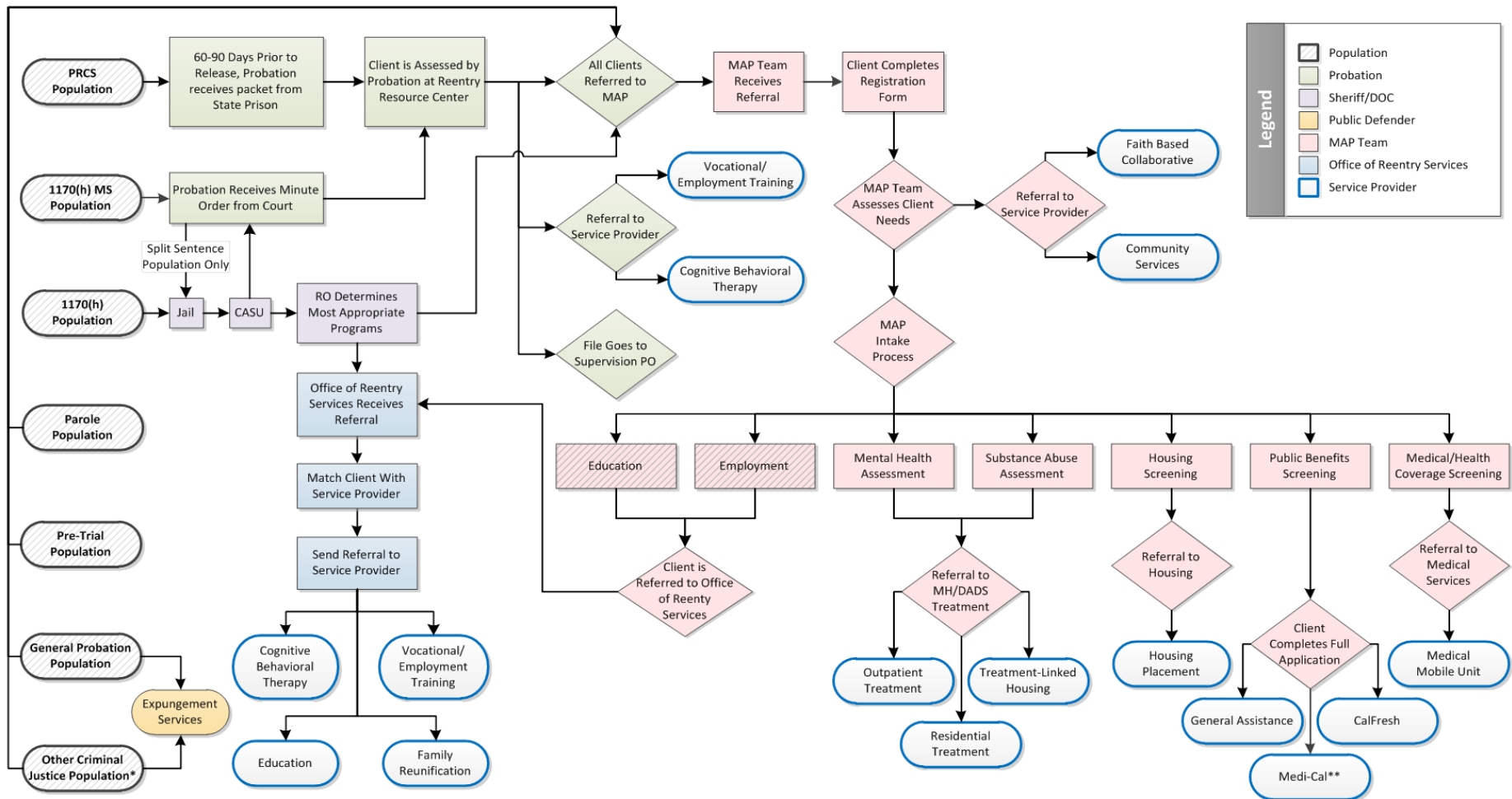
FY2014 TOTAL BUDGET: \$53,999,863



Reentry Resource Center: A Model of Cross-Systems Collaboration



Data & Evaluation – Reentry Systems Mapping



*Includes: 3 Striker Population; walk-ins with history in the criminal justice system

**As of January 2014

RRC Programs Offered by Sheriff/DOC

- **Custody Alternative Supervision Unit (CASU)**, provides supervision and support to the Custody Alternative Supervision Program (CASP) participants under PC1170(H).
 - **302 Total in-custody participants** to date since October 2011 and **175 Total in-custody participants have completed** program to date since October 2011
 - Team of Sheriff's Office Sgt. & Deputies provide **supervision in community** for **58-75 in-custody CASU participants monthly (ongoing)** and several of the CASU in-custody individuals **go on to be supervised by Probation Department**.
- **Reentry Correction Program (RCP)**, Behavioral Modification classes with Milpitas Adult Education, Trauma Recovery with Custody Health, Case Management by DOC Rehabilitation Officers, and Supervision by Sheriff's Office Deputies.
- **Public Service Program (PSP)**, Superior Court and Sheriff's Office Inmate Screening Unit identifies participants to live at home and complete jail sentence by working at Department of Correction pre-approved community work site.
- **Weekend Work Program (WWP)**, a court mandated program for low-risk offenders.

RRC Programs Offered by Partners- Probation, MAP & FBC

Probation

- Probation does initial intake for the AB109 PRCS(Prison population) and 1170(h)(County Jail Population) releases.
- Probation Administers the Correction Assessment and Intervention System(CAIS) for recidivism with reporting probationers.
- 5 Probation team members and 1 Peer mentor support probationers at RRC, and PRO will add additional Probation Officer this winter.
- Conducted 1,612 Probation Assessments between October 2011-September 2013.

Multi Agency Program (MAP) Team

- Mental Health, DADS, Custody Health, & Social Services Agency are providing Health & Human Services through screening, assessment, referral, and linkage to county programs.

Faith Based Collaborative – Mental Health Department

- 3 funded Reentry Resource Centers to community based organizations located in the different regions of Santa Clara County providing basic needs and program support to those exiting the Federal, State, and County correction systems.

BIBLE WAY CHRISTIAN CENTER

2090 OAKLAND ROAD
SAN JOSE, CA 95131

CATHEDRAL OF FAITH

2315 CANOAS GARDEN AVE
SAN JOSE, CA 95125

MARANATHA CHRISTIAN CENTER

1811 SOUTH 7TH STREET
SAN JOSE, CA 95112

Services Offered at RRC

- Assessment and Referral for Mental Health, Alcohol and Drug Recovery Services
- Counseling
- Peer Mentoring
- Housing Referral & Transitional Case Management
- General Assistance
- Cal Fresh Program & Food Pantry
- Access to Health Coverage Programs
- Health Referrals
- Clothes Closet
- Transportation (*Bus Tokens for completing Assessment & Referral Services*)
- Referral to other community services
- Referral to the faith collaborative community based resource centers

Contact: Jose Flores, LCSW
MAP Program Manager
408-591-3619 / Jose.Flores@hhs.sccgov.org

Contact: MAP Team for Services
408-535-4280

Multi Agency Program (MAP)- RRC Onsite Reentry Partner

- **75% increase in visitors** coming to see the MAP Service Team since January 2013.
- **1,007 individuals** screened for health coverage, and of these **879 have applied for Valley Care-Low Income Health Plan(LIHP)** between January-November 2013. (Mental Health Dept.)
- **1,852 have applied and were approved for Public Benefits** (General Assistance, Cal Fresh-Food Stamps, and/or Medi-Cal) through Social Services Agency (May 2012-September 2013).



- **1,155 clients** have received over **6930 clothing items** from the RRC Clothes Closet (January-November 2013)
- **2,236 clients and their family members** (215 of these persons were children) have received **26,654 food items** (January-November 2013)



Health & Well-Being – Mobile Medical Unit



- **Schedule:** Wednesday afternoons & Fridays
- **Patient Seen (Sept.-Nov. 2013):** 127 patients
 - Total Visits = 198
 - 30% of the patients have been seen at least once for follow-up
- **Custody History**
 - 85% from Jail
 - 14% from Prison
 - 50% of the patients have been released less than one month
- **Reasons for Clinic Visits:**
 - 50% - General Check Up
 - 35% - Chronic Condition Medication Refills
 - 20% - Urgent Needs
 - 14% - Form Completion

Strategic Priorities: Housing

Housing

To improve short- and long-term affordable housing for formerly incarcerated individuals who are at moderate or high risk of recidivating in Santa Clara County.

\$4 million in one-time Public Safety Realignment fund has been allocated toward housing strategies for reentry population.

- Custody Health Higher User Initiative
- Homeless Prevention and Emergency Assistance
- Rapid Rehousing for Families with Children
- New Proposition 36 Rental Assistance Program
- Solutions for 290 Registrants

Strategic Priorities: Education

Education

To increase educational opportunities for moderate- and high-risk offenders in custody and in the community.

Milpitas Adult Education (MAE) has been selected to provide educational services. Their services will include:

- Educational Assessment
- Adult Literacy
- Computer Literacy
- GED Preparation and Testing
- High School Diploma Program
- ESL Classes
- Special Education Services
- Establish a Resource Library at the Reentry Resource Center

Strategic Priorities: Employment

Employment

To increase the number and percentage of formerly incarcerated individuals successfully participating in and completing job training/preparation programs that will lead to gainful employment.

Goodwill, Catholic Charities and InnVision Shelter Network have been selected to provide employment and vocational services. Their services include:

- Job Readiness
- Employment Participation
- Job Search Assistance
- Subsidized On-the-Job-Training
- Job Placement
- Peer Mentors
- Sustainability Initiative (FAF)

Strategic Priorities: Family Reunification & Support

Family Reunification & Support

To promote familial support and reunification for moderate- and high-risk offenders and reduce the impact of incarceration on their children.

Community Solutions has been selected to provide family engagement and reunification services. Their services include:

- Positive relationships with family members and other pro-social supports.
- **First 5 Therapeutic Services** support families who face serious barriers to their child's healthy development by focusing on self-esteem, building positive-child relationships and health social/emotional development.
- **Hosts Family Action Night** every six weeks

Strategic Priorities: Health & Well-being

Mental Health

To enhance the accessibility of mental health treatment services and medications for all ex-offenders after release.

Substance Abuse

To enhance the accessibility of substance abuse treatment services for all ex-offenders after release.

Health

To enhance accessibility to needed health care services for all ex-offenders after release by enrolling ex-offenders in Medicaid or other health benefits, if they meet eligibility criteria.

Mobile Medical Van

- Provide access to primary care services

Drug Dependence

- Increase the number of residential treatment beds

The Future (next 6 months)

- Improve access to psychiatric services with on-site psychiatry
- Improve hand off of high-risk in-custody patients
- Increase clinic days at the Reentry Center
- Health Education and Outreach: classes for CASU, flu clinics.

Next Steps

- Ongoing Process and Outcome evaluation of focus groups with clients and inmates; key informant interviews, performance measure review and analysis of service and justice-system data to assess relationship between services and recidivism.
- The BOS recently approved funding for a comprehensive Jails Needs assessment to address concerns regarding aligning the County's facility needs with the changing jail population. We expect completion of this analysis in the next 6 to 9 months.

Office of Reentry Services - Contact Information

Javier Aguirre

Director of Reentry Services

County Executive Office

Phone: (408) 535-4283

E-mail javier.aguirre@ceo.sccgov.org

Buu Thai

Reentry Policy Coordinator

Phone: (408) 535-4277

E-mail buu.thai@ceo.sccgov.org

Lorena Madrid

RRC Program Manager

Phone: (408) 535-4236

E-mail lorena.madrid@ceo.sccgov.org

Reentry Resource Center

151 W. Mission Street

San Jose, CA 95110

Main: 408-535-4299