

Connecting the Region



Altamont Regional Rail Working Group
Presented by Mayor John Marchand, City of Livermore

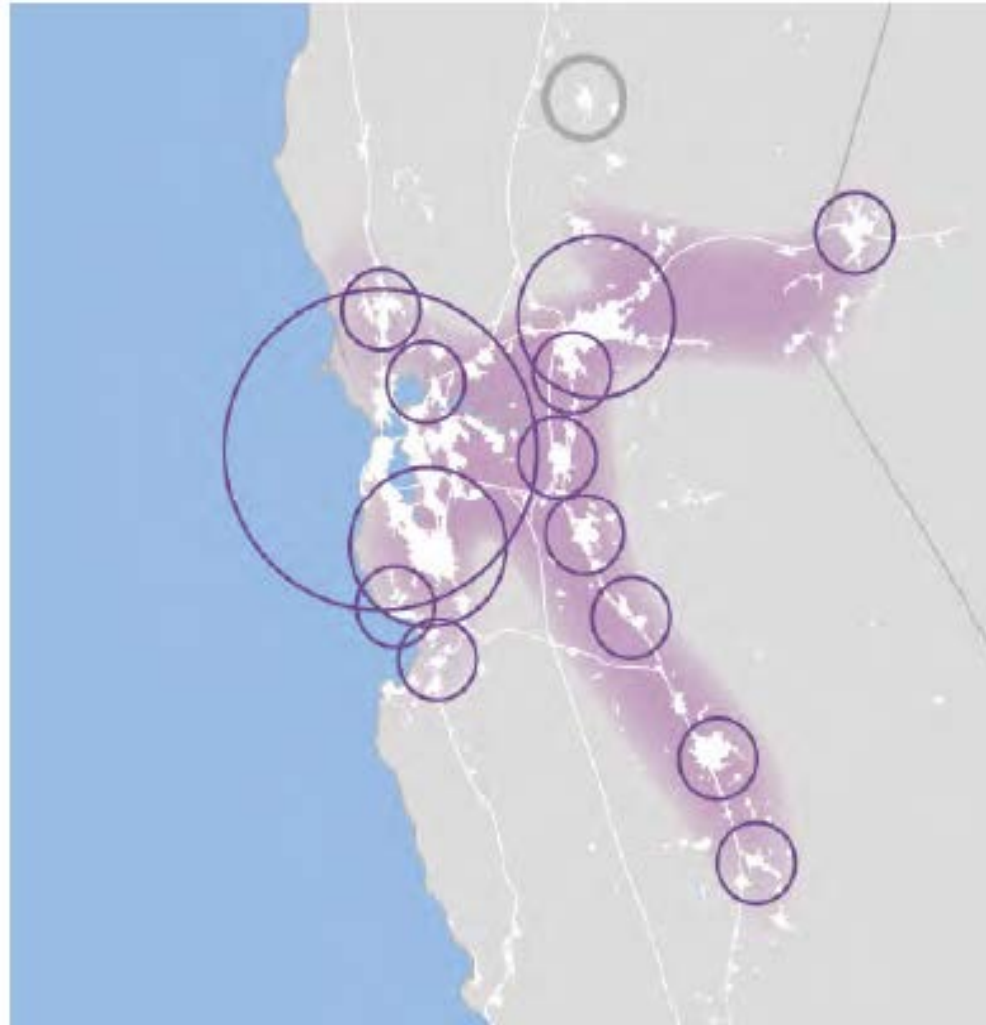


Inter-Regional Perspective

Altamont Regional Rail Working Group
Presented by Mayor John Marchand, City of Livermore

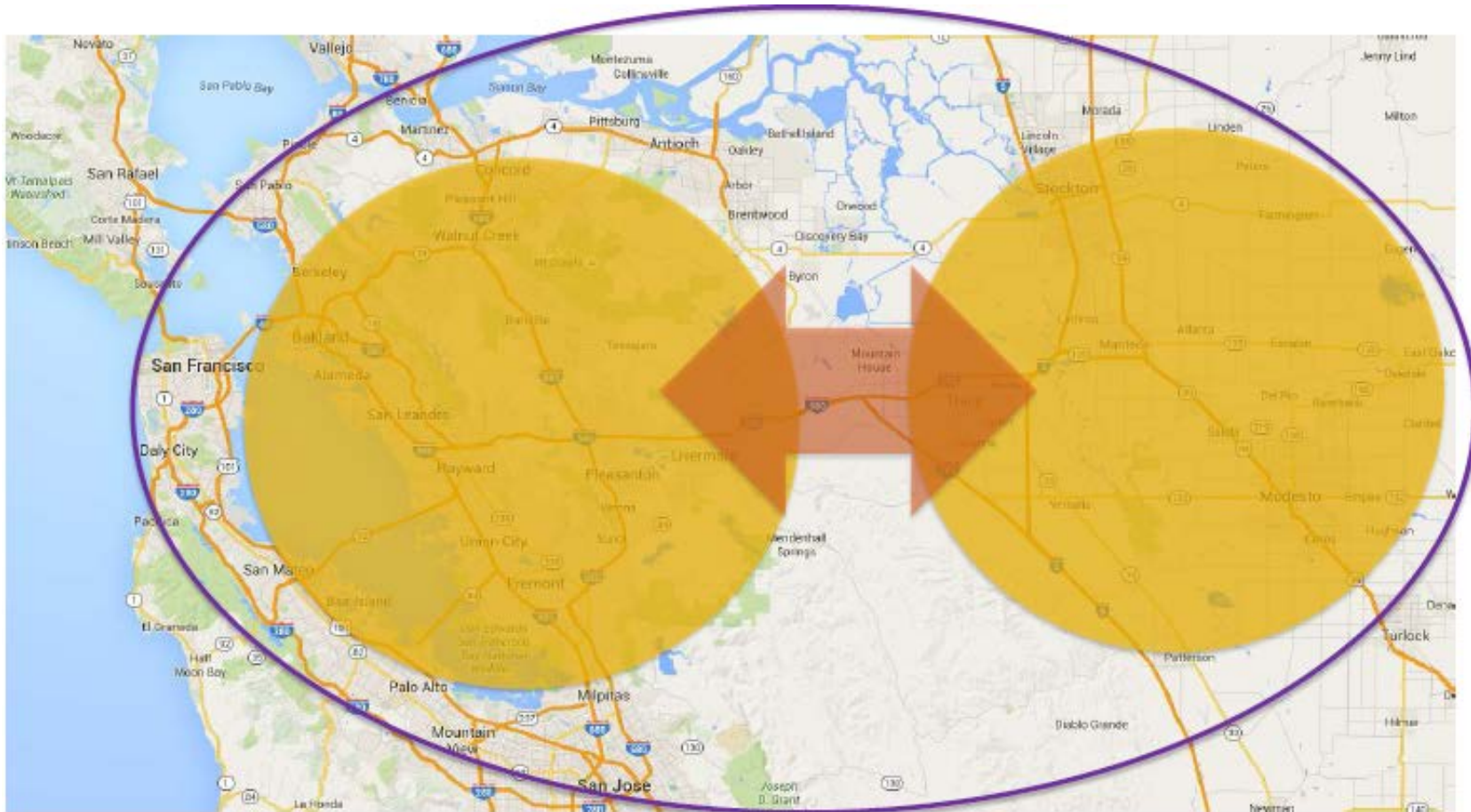


Northern California Mega-Regions





Inter-Regional Transportation Demands

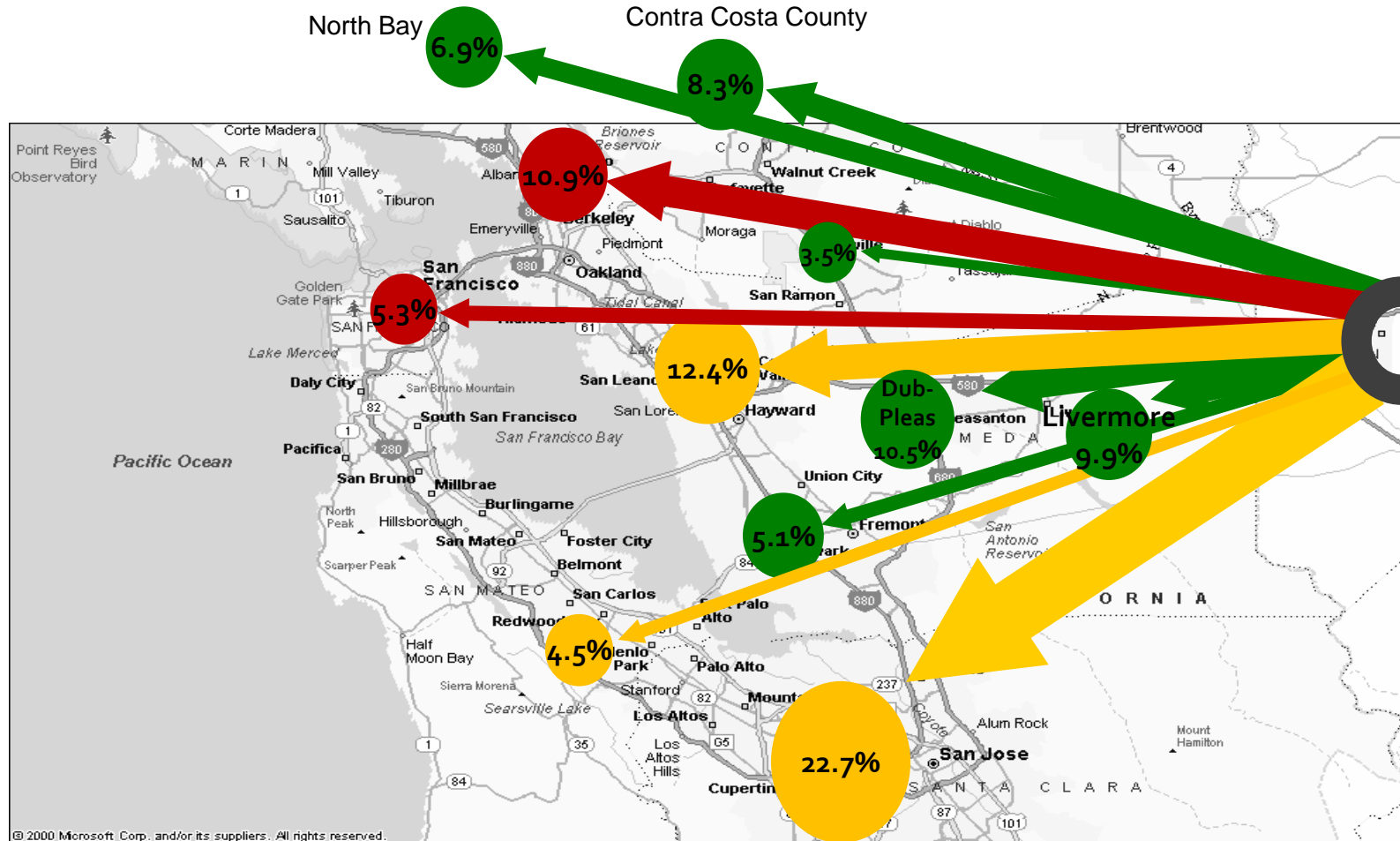


Altamont Regional Rail Working Group

Bay Area Destinations

Trips From San Joaquin Valley

AirSage Distribution Incorporated – 95,100 Round Trips in 2035



Inter-Regional Transit Connectivity

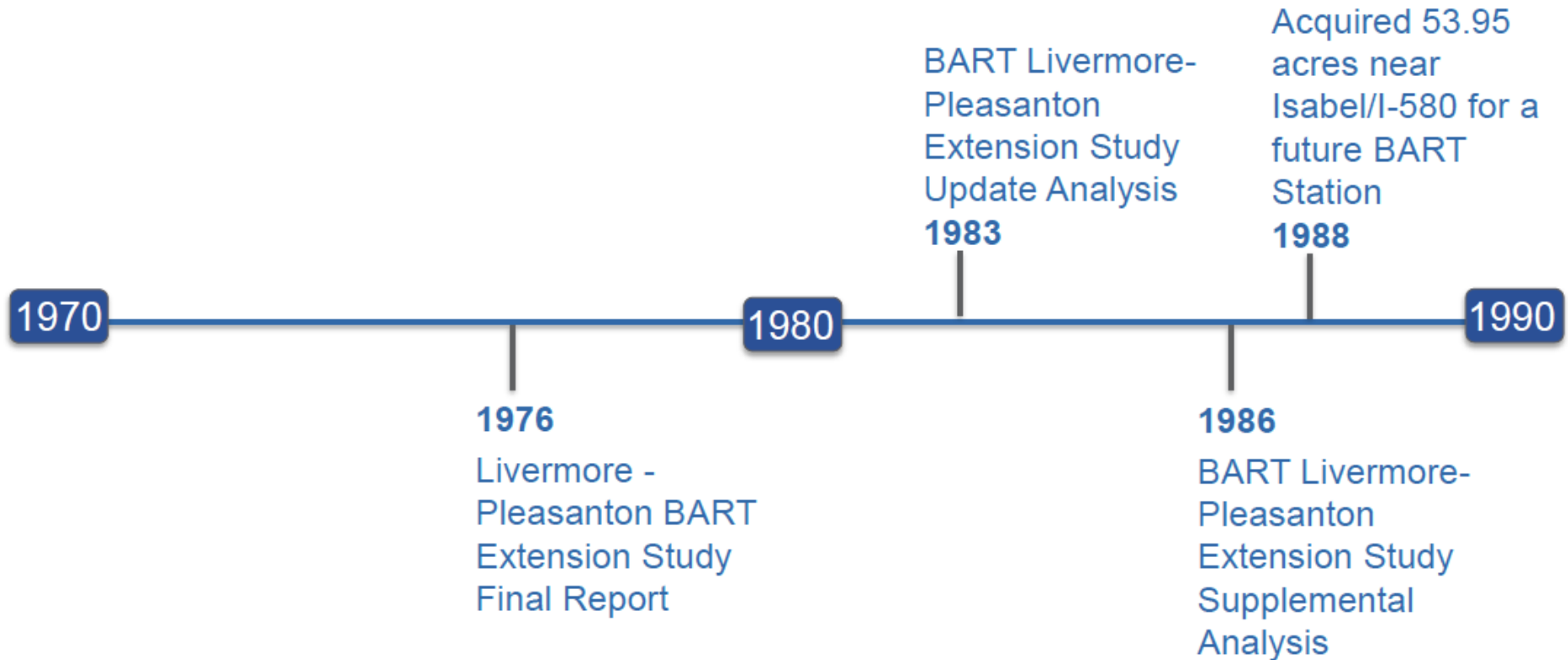




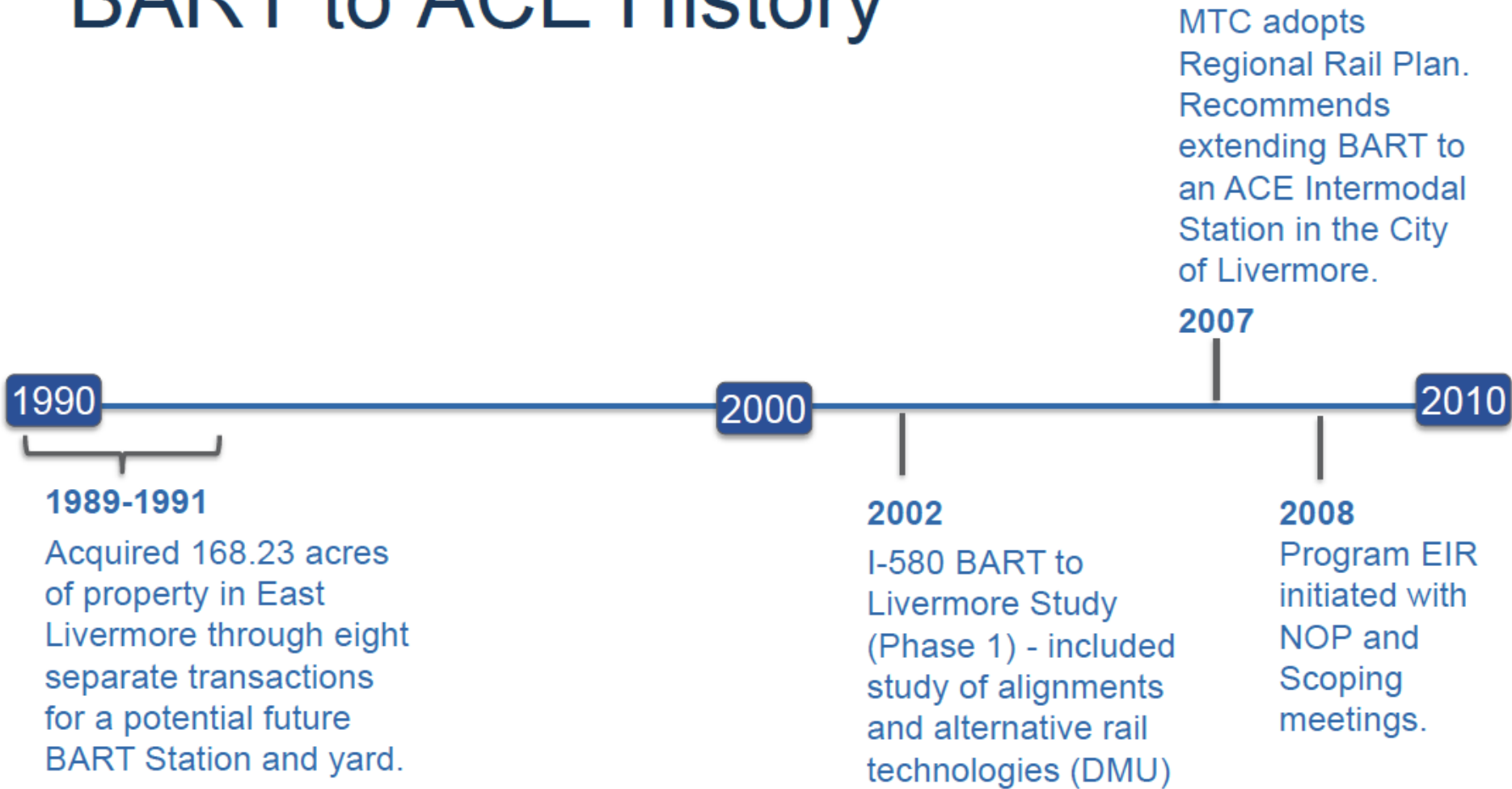
BART to ACE

Altamont Regional Rail Working Group

BART to ACE History



BART to ACE History





BART to ACE Project

- Phase 1 – BART to Isabel
 - Extend rail line by 4.8 miles
 - Incorporate improvements to local bus systems
- Phase 2 – BART to Greenville
 - Extend rail line by an additional 6.7 miles for a total of 11.5 miles
 - Connects directly with ACE Station

BART to ACE Project

- Conceptual engineering and an EIR for four alternatives
- Technical studies
 - Ridership forecasting
 - Traffic impacts
 - Cost estimation
 - Environmental studies

Current Project Funding

- \$551 million total committed funding
 - \$400 million Alameda County Measure BB
 - \$95 million AB1171 (bridge tolls)
 - \$16 million RM1 (bridge tolls)
 - \$40 million Traffic Impact Fees
- The BART extension to Isabel is included in Plan Bay Area



Project Schedule

Assuming a smooth process and funding availability...

- Early 2017 Release DEIR
- Mid 2017 Identify recommended alternative
- Late 2017 Release FEIR, adopt project
- 2019 Release DEIS
- 2020 Release FEIS
- 2021-2023 Complete design
- 2025-2027 Complete construction of Phase 1



Benefits of Connectivity

- Affordable housing connected to job centers
- A more efficient use of existing infrastructure
- Greenhouse gas reduction
- Improved air quality
- Enhanced goods movement
- Travel time reduction

Overall Result:

A more dynamic, robust inter-regional economy and improved quality of life!

Objectives

- Increase project awareness
- Provide information on benefits to our region
- Importance of inter-regional connectivity



Mayor John Marchand

mayormarchand@cityoflivermore.net

925-960-4020

Altamont Regional Rail Working Group